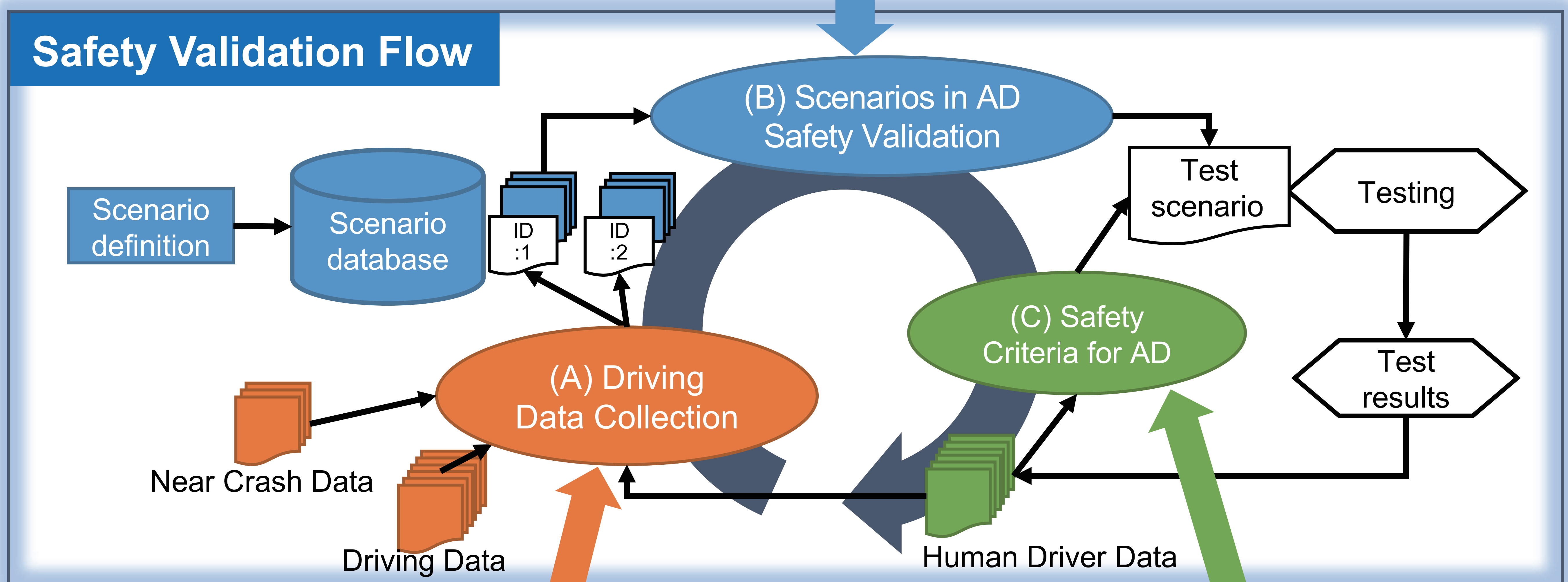
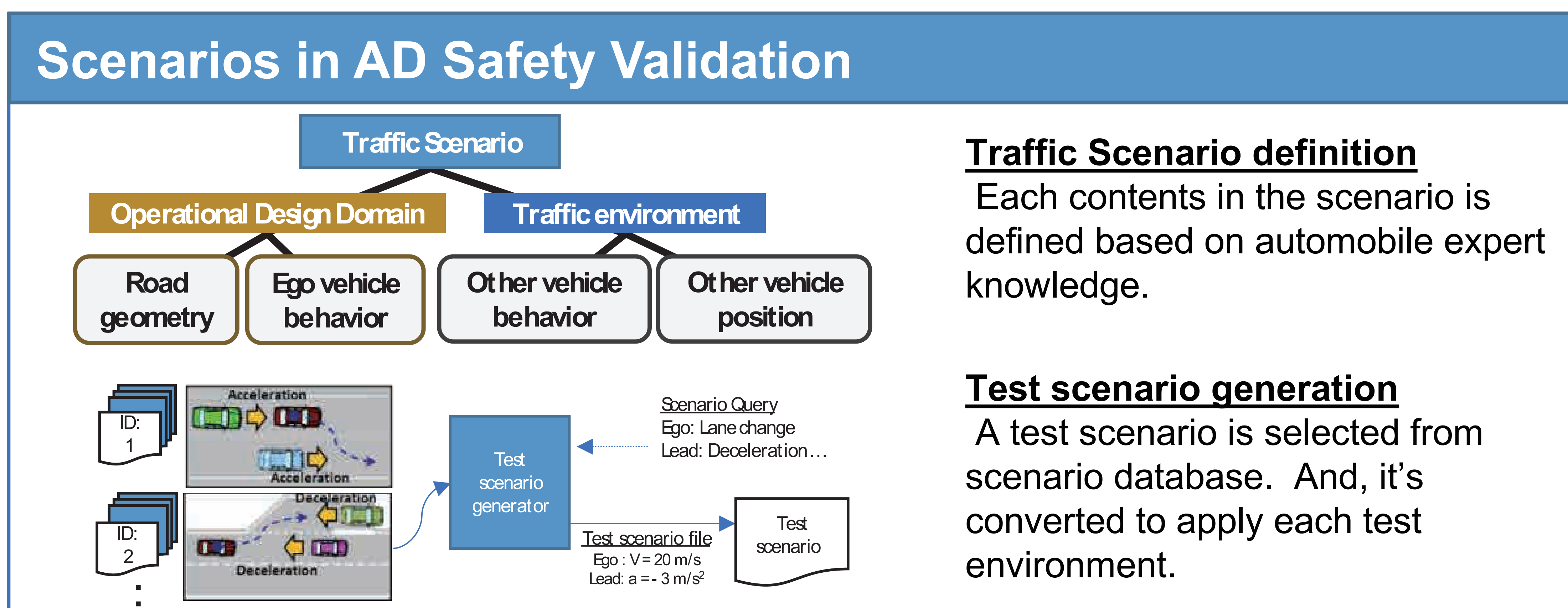


# Safety Validation for Automated Driving in Japan



## Project over view

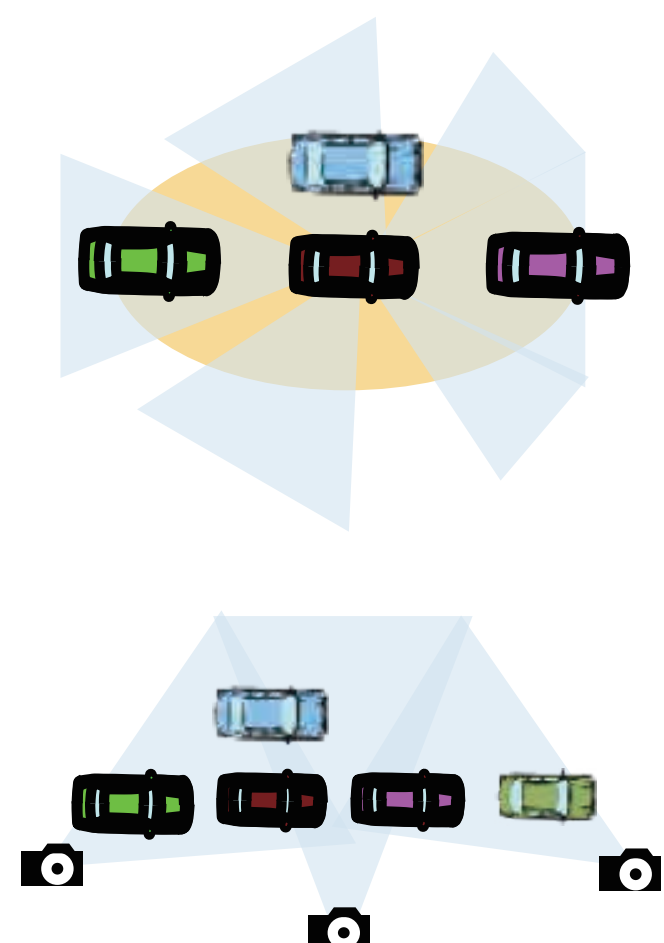
- Automated Driving functions are now in developing on Japanese express way toward to 2020.
- For the sake of the purpose, the Safety validations for AD is required.
- The validation has flow driven by the driving data, scenario data and human driver data.
- METI promotes the research and development each process for actual and smooth validation flow.



### Driving Data Collection

#### Scenario generation and classify

Data are recorded by equipped vehicle and fixed location camera for express way. Scenarios are generated from them and classify by a computer processing.



#### Equipped Vehicle

- LIDAR (over 100m, 360 deg.)
- Camera (360 deg.)

#### Fixed location camera

- Camera (4K resolution)
- All other vehicle relative positions can be detected

### Safety Criteria for AD

#### Discussion about safety

- How the driver decide to avoid accidents depending on the situation ?
- Research results provide basic data to discuss the safety criteria for AD.
- One of the **Safety criteria** is introduced.

