

Dynamic Map Development in SIP-adus

Cross-Ministerial **S**trategic **I**nnovation **P**romotion Program
Innovation of **A**utomated **D**riving for **U**niversal **S**ervices

October 27, 2015

Ryota Shirato

Member of System Implementation WG, SIP-adus
(Nissan Motor Company)

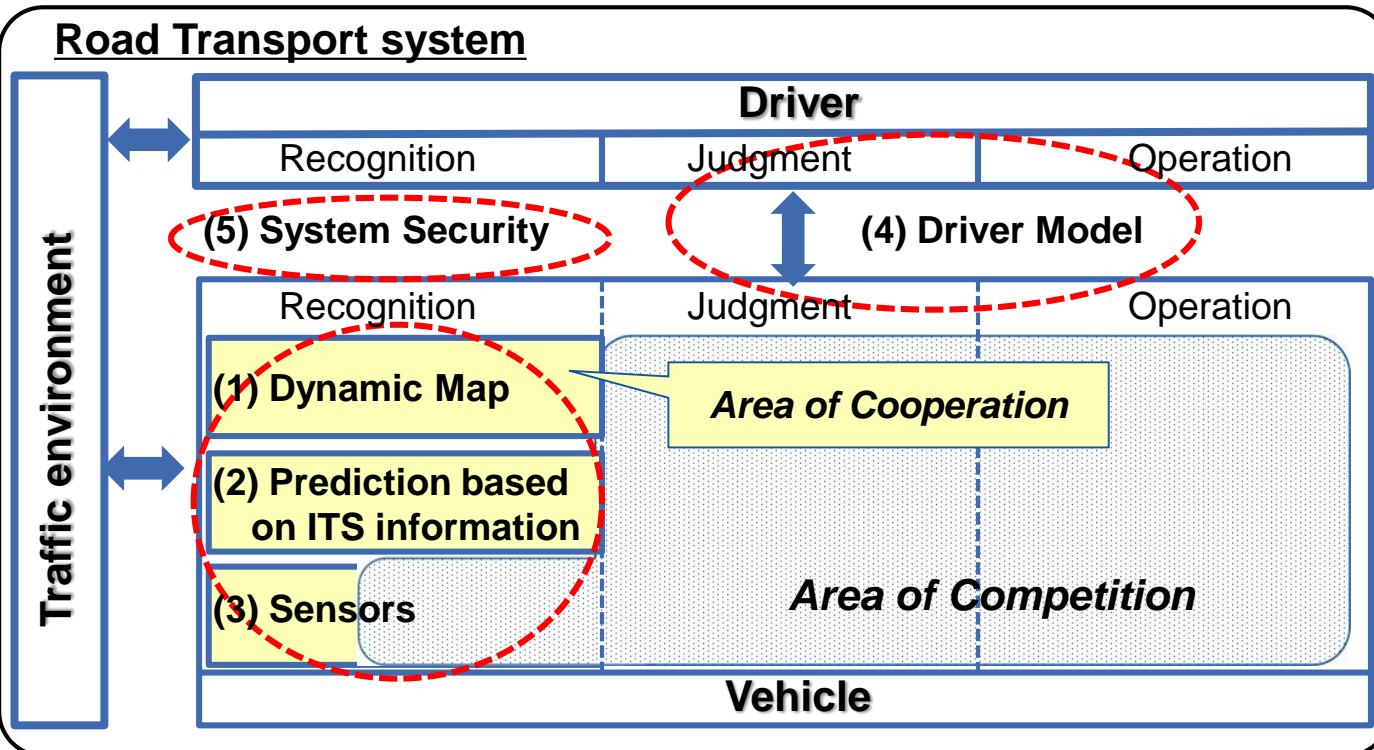


Scope of SIP-adus

(I) Development and verification of automated driving system

(III) International cooperation

Road Transport system



- (1) Open research facility
- (2) Social acceptance
- (3) Technology transfer

- (1) Enhanced local traffic management
- (2) Next generation transport system

- (1) Traffic fatality reduction effect estimation method & national shared database
- (2) Macro and micro data analysis and simulation technology
- (3) Local traffic CO₂ emission visualization technology

(IV) Development for next generation urban transport

(II) Basic technologies to reduce traffic fatalities and congestion

Dynamic Map

Hierarchical structure of digital 'Map' layered by time frame

Time frame

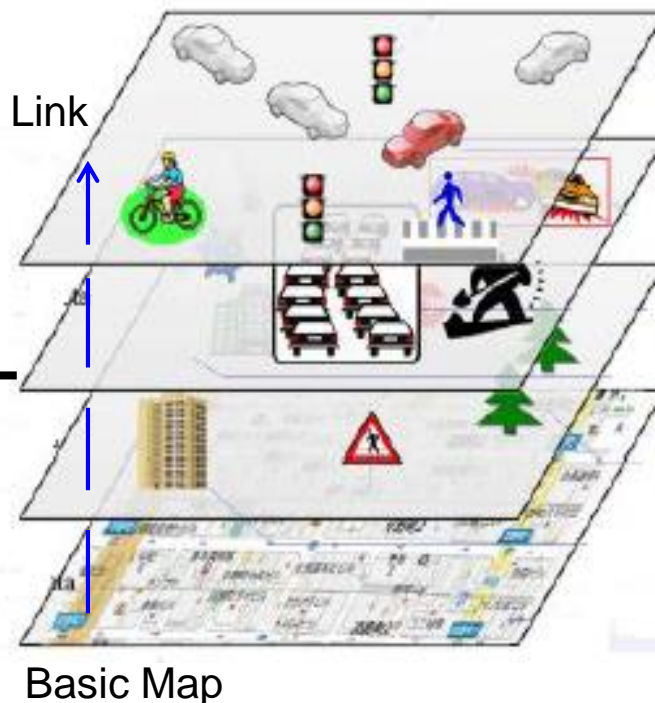
Dynamic (< 1 sec)

Semi-dynamic (< 1 min)

Semi-static (< 1 hour)

Static (<1month)

Linked layers



Information through V to X

- surrounding vehicles
- pedestrians
- timing of traffic signals

Traffic Information

- accidents
- congestion
- local weather

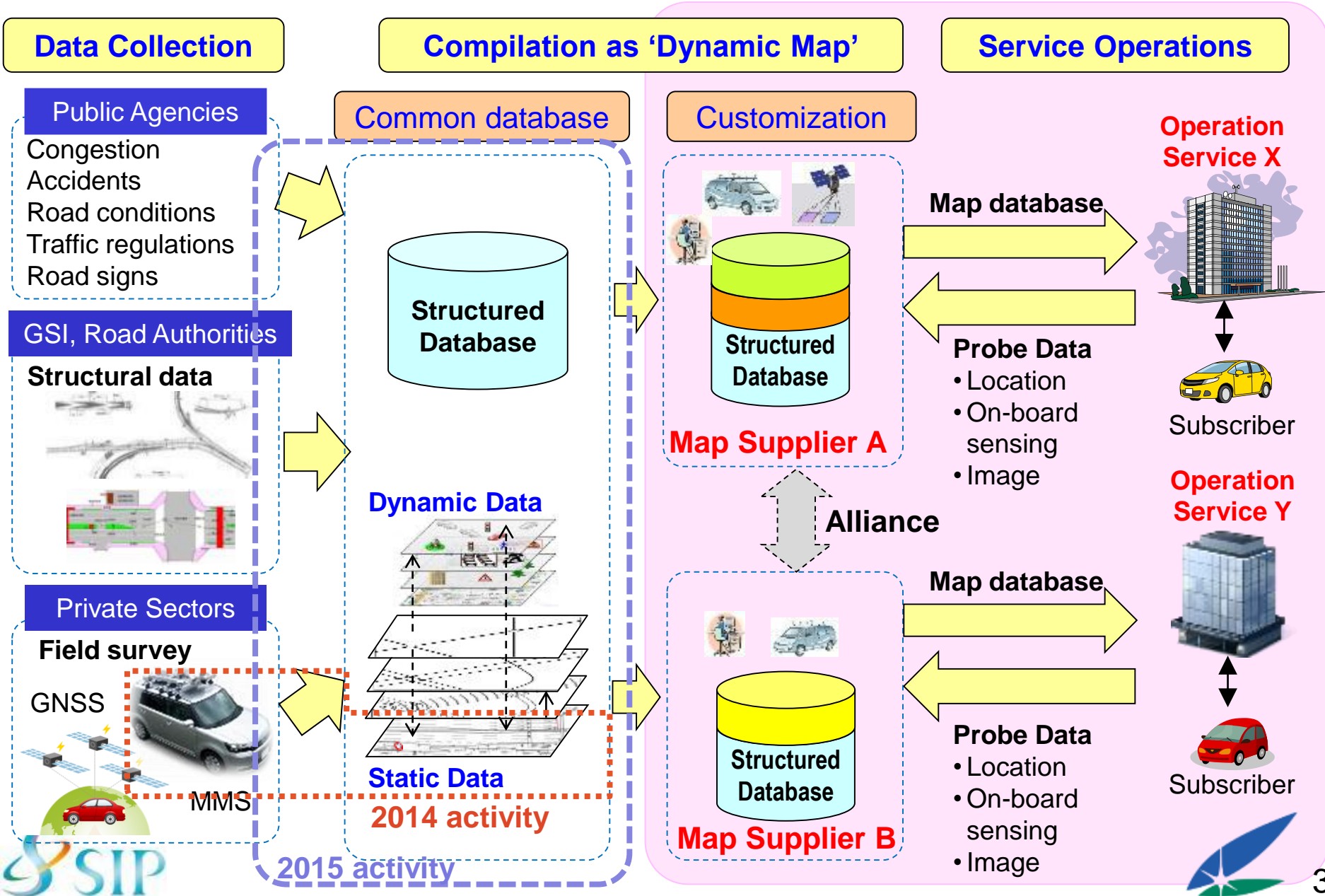
Planned and forecast

- traffic regulations
- road works
- weather forecast

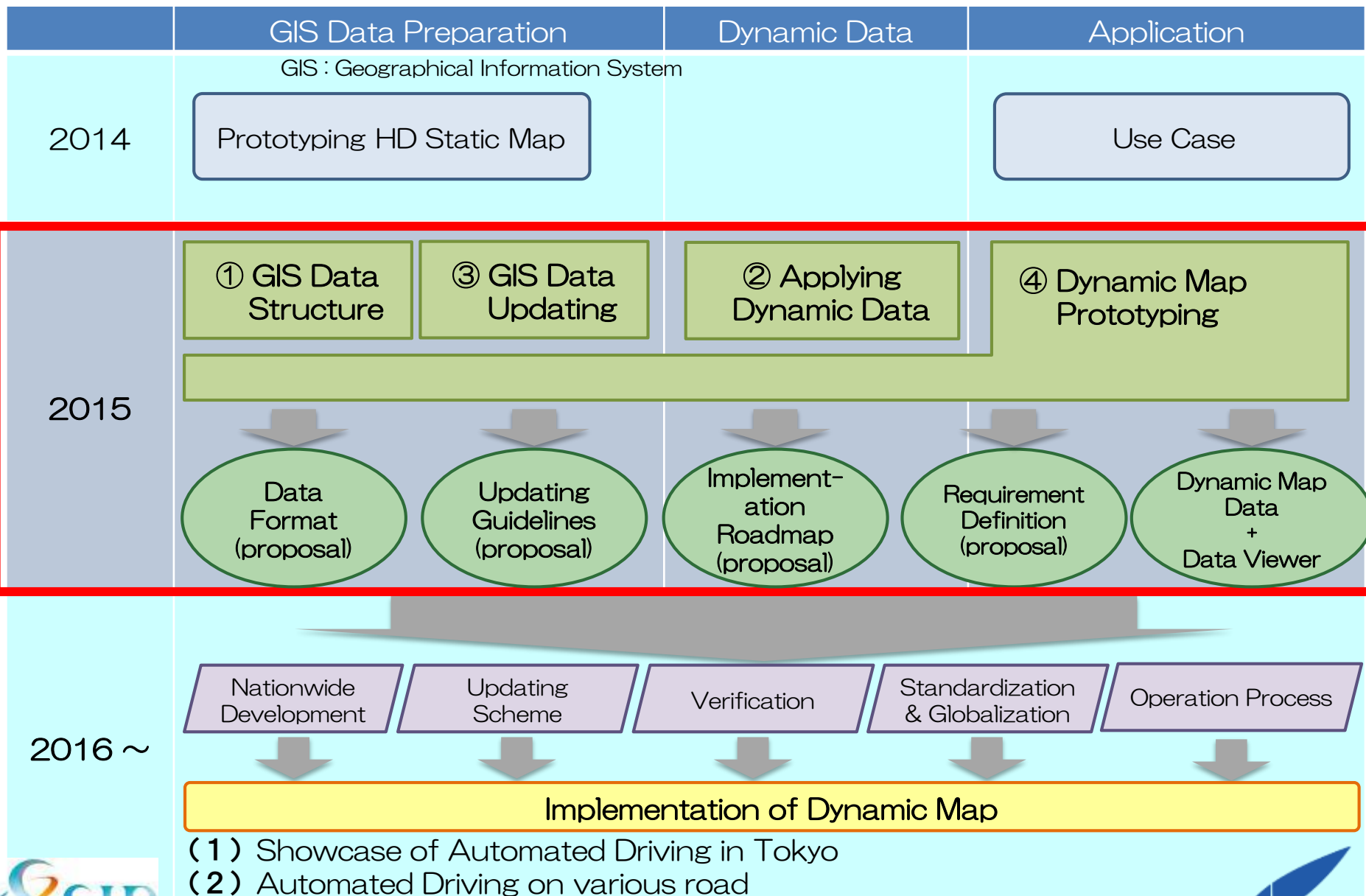
Basic Map Database

- Digital cartographic data
- Topological data with unique
- Road Facilities

Framework for Dynamic Map



Static + Dynamic Data Structuring



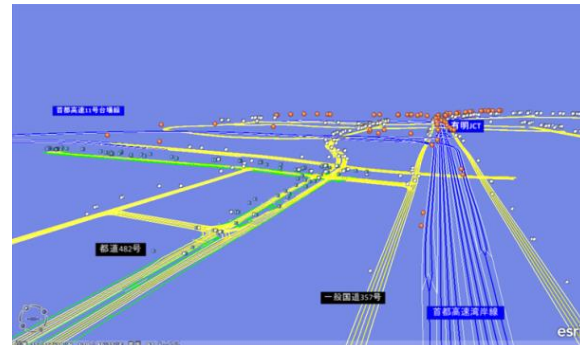
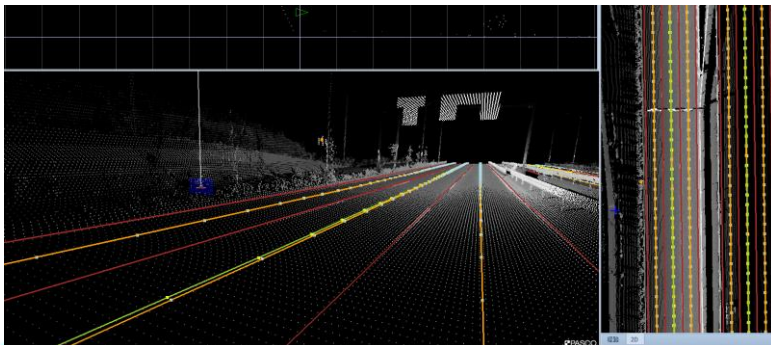
2nd SIP-adus Workshop

Dynamic Map Breakout Session

Date: October 28, 13:30-17:30

- Topics:**
1. How to get HD map information
 2. Dynamic & Static data integration
 3. Communication devices for providing dynamic data

:



Thank you for your attention !